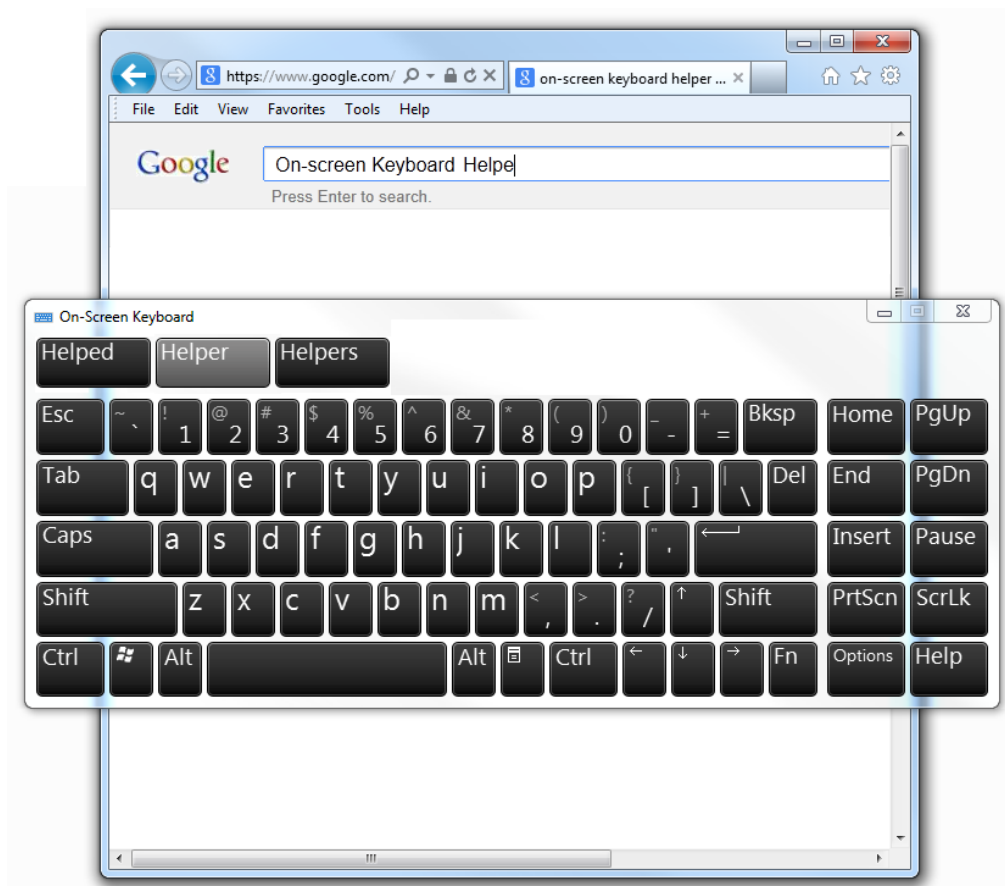


Inteset Systems

On-screen Keyboard Helper

ver 1.0
For
Windows



User Guide

Contents

Welcome	3
System Requirements	3
Installation	3
Using the On-screen Keyboard Helper Utility	4
On-screen Keyboard Options	4
Keyboard Settings	4
Support	5

Welcome

Thank you for using the Inteset Systems On-screen Keyboard Helper utility. This program makes up for the shortcomings of the free on-screen keyboards that are included with Windows. Windows XP, Vista, 7, and 8 all include 2 variations of fully functional, elegant virtual keyboards. One is called *On-screen Keyboard* (general purpose keyboard with word predict capabilities), the other, *Tablet PC Input Panel* (designed for touch and pen input devices). These keyboards work wonderfully with Windows applications, however, the main problem is that a user can exit the keyboard in a locked down system without the ability to restore it. With *the On-screen Keyboard Helper* utility, you can confidently use either keyboard with your kiosk, single-purpose, or any locked down system without the fear of the keyboard being exited.

The On-screen Keyboard Helper utility includes the following features:

- Works with both Windows On-screen Keyboard and Tablet PC Input Panel keyboards
- Prevents the permanent exit of the keyboard
- Provides a visual keyboard toggle option, or an “always visible” option
- Can run the keyboard on login
- Works with Windows XP and greater

System Requirements

The list below describes the system requirements of the On-screen Keyboard Helper utility.

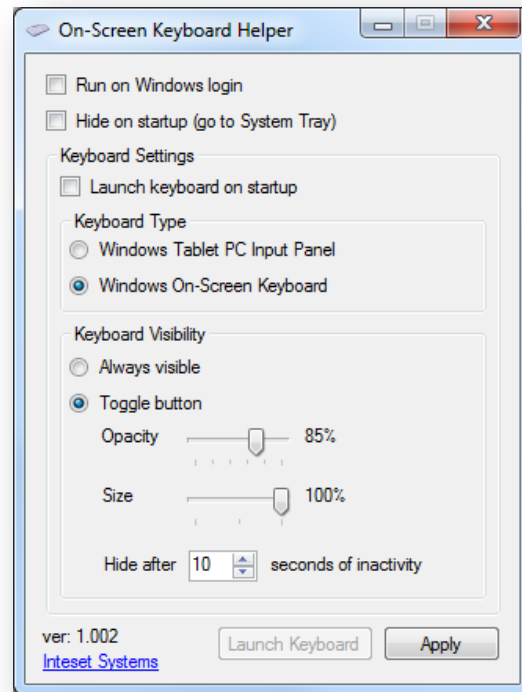
- Runs with any version of Windows (XP, Vista, 7, 8)
- .Net 3.5 or higher
- Windows XP – Service Pack 3
- Windows XP – Tablet PC Input Panel (optionally installed)

Installation

Installing On-screen Keyboard Helper is simple and quick. It is the same installation process as required by many standard Windows applications. You can begin the installation procedure by double-clicking on the “OnScreenKeyboardHelperInstall.exe” file and following the instructions displayed by the installation application. Once the installation is complete, you can On-screen Keyboard Helper by selecting the *Windows Start* button, then *All Programs*, then *Inteset*, then *On-screen Keyboard Helper*.

Using the On-screen Keyboard Helper Utility

Setting up On-screen Keyboard Helper is simple and quick. Typically, you'll only need to configure it once; it then runs on its own each time the user logs in. It can be configured to use either of the two virtual keyboards included with Windows based on your system's needs. Below are described the various settings of the On-screen Keyboard Helper utility.



On-screen Keyboard Options

Run on Windows login – Select this option to run the Helper utility on Windows login. Once the user logs in, the helper utility will start.

Note: The Windows virtual keyboard should be configured to “Start on login” as well. This can be accomplished within the settings of the virtual keyboard you choose. Doing so will ensure that the virtual keyboard is available during the Windows login prompt.

Hide on startup – To hide the On-screen Keyboard Helper settings screen, select this option. When the Helper utility is started, it will be minimized to the Windows System tray. If this option is checked and the *Minimize* button is pressed, the screen will go to the System Tray. To invoke the settings screen, click on the keyboard icon in the System Tray.

Keyboard Settings

Launch keyboard on startup – Select this option to launch the virtual keyboard when the On-screen Keyboard Helper utility is started.

Windows Tablet PC Input Panel – Choose this radio button if you want to use the Windows Tablet PC Input Panel as the virtual keyboard. This keyboard is typically used with touch screen interfaces. Along with a keyboard, it can translate pen input writing to text.

Note: This option may be grayed out on Windows XP systems. You will need the Windows XP - Tablet PC Edition operating system, or you'll need to install this feature on Windows XP. Search the web on how to install this feature if you like to use it on any version of Windows XP.

Windows On-screen Keyboard – Choose this radio button if you want to use the Windows On-screen Keyboard. This keyboard is good for any system without a physical keyboard. From Windows Vista and greater, it also has a helpful *word prediction* feature that can speed up text entry. The keyboard can also be stretched to the size desired by the user and has a convenient *number pad* feature.

Always visible – Select this radio button if you want the keyboard to always appear on the screen. If the user closes or minimizes the keyboard, it will immediately reappear on the screen.

Toggle button – Select this radio button to use an *always on* toggle button that is in the shape of a miniature keyboard as shown below. This toggle button, when pressed, will either minimize or restore the virtual keyboard depending on its current state. The toggle button can be moved by dragging the top part of the button to any position on the screen.



Opacity – To make the toggle button less prominent and see-through, adjust the *Opacity* slider control to the left.

Size – To reduce the size of the toggle button, adjust the *Size* slider control to the left.

Hid after – Hide the toggle button after the specified seconds of inactivity. Up to 1 hour can be specified (3,600 seconds). If “0” seconds (default) is defined, the toggle button will never be hidden.

Support

Support for On-screen Keyboard Helper is available through the <http://www.intesetsystems.com> Forum pages. Here, you can ask questions to the community and to Inteset technicians. If the question is directed toward an Inteset technician, you can expect a response in 24 hours or less.